



ADVANCED SYSTEMS

DESIGNERS & INTEGRATORS OF INDUSTRIAL DOORS & DOOR CONTROL SYSTEMS

1020 W. 14 MILE ROAD • CLAWSON, MI 48017 • PHONE 877 436 - 0302 • WWW.ADVANCEDSYSTEMSDOORS.COM

Rolling Steel Service Doors





ADVANCED SYSTEMS

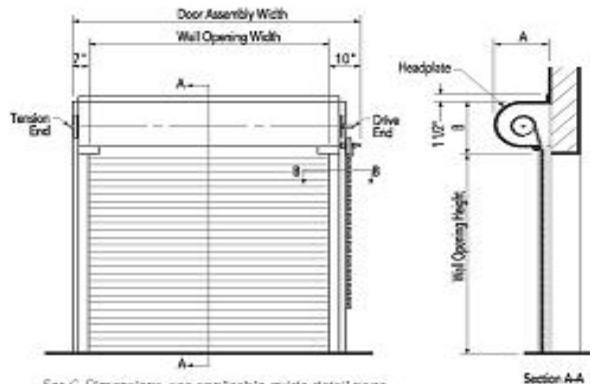
DESIGNERS & INTEGRATORS OF INDUSTRIAL DOORS & DOOR CONTROL SYSTEMS

1020 W. 14 MILE ROAD • CLAWSON, MI 48017 • PHONE 877 436 - 0302 • WWW.ADVANCEDSYSTEMSDOORS.COM

Door Clearance Elevations

Face-of-Wall Mounted

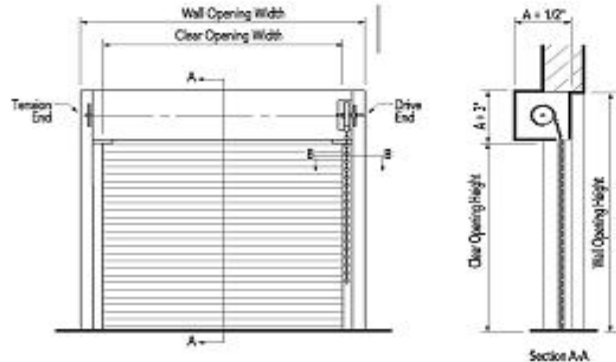
Operation: Push-up, chain hoist, crank or electric.



For G Dimensions, see applicable guide detail page.
 ** Add 7" (178 mm) for crank operation.
 * A = 6" (127 mm) for electric operation.

Between Jambs Mounted

Operation: Push-up, chain hoist, crank or electric.



For clearance details on electrically operated doors, see Electric Operators pages 24.

Door Clearance Dimensions

Dimension A C187 Slat

(Series 610 only)

Opening Height	Max. Door Opening Widths
	15'4" (4674 mm)
Thru 6'0" (1829 mm)	14" (356 mm)
Thru 11'0" (3353 mm)	14" (356 mm)
Thru 15'0" (4566 mm)	16" (406 mm)
Thru 21'0" (6401 mm)	18" (457 mm)
Thru 30'0" (9144 mm)	24" (610 mm)

Dimension A F265 Slat

Opening Height	Max. Door Opening Widths			
	20'0" (6096 mm)	24'0" (7315 mm)	30'0" (9144 mm)	
Thru 6'0" (1829 mm)	16" (406 mm)	16" (406 mm)	18" (457 mm)	
Thru 8'0" (2438 mm)	18" (457 mm)	18" (457 mm)	20" (508 mm)	
Thru 9'0" (2743 mm)	18" (457 mm)	18" (457 mm)	20" (508 mm)	
Thru 11'0" (3353 mm)	18" (457 mm)	18" (457 mm)	20" (508 mm)	
Thru 13'0" (3962 mm)	20" (508 mm)	20" (508 mm)	20" (508 mm)	
Thru 16'0" (4877 mm)	20" (508 mm)	20" (508 mm)	22" (559 mm)	
Thru 18'0" (5486 mm)	20" (508 mm)	22" (559 mm)	24" (610 mm)	
Thru 21'0" (6401 mm)	22" (559 mm)	24" (610 mm)	24" (610 mm)	
Thru 23'0" (7010 mm)	22" (559 mm)	24" (610 mm)	24" (610 mm)	
Thru 25'0" (7620 mm)	24" (610 mm)	24" (610 mm)	26" (660 mm)	
Thru 28'0" (8534 mm)	26" (660 mm)	26" (660 mm)	26" (660 mm)	
Thru 30'0" (9144 mm)	26" (660 mm)	26" (660 mm)	28" (711 mm)	

Dimension A C275 Slat (Series 610 only)

Opening Height	Max. Door Opening Widths			
	20'0" (6096 mm)	24'0" (7315 mm)	30'0" (9144 mm)	
Thru 6'0" (1829 mm)	14" (356 mm)	14" (356 mm)	18" (457 mm)	
Thru 8'0" (2438 mm)	16" (406 mm)	16" (406 mm)	18" (457 mm)	
Thru 9'0" (2743 mm)	16" (406 mm)	18" (457 mm)	20" (508 mm)	
Thru 11'0" (3353 mm)	16" (406 mm)	18" (457 mm)	20" (508 mm)	
Thru 13'0" (3962 mm)	18" (457 mm)	18" (457 mm)	20" (508 mm)	
Thru 16'0" (4877 mm)	18" (457 mm)	20" (508 mm)	22" (559 mm)	
Thru 18'0" (5486 mm)	20" (508 mm)	22" (559 mm)	24" (610 mm)	
Thru 21'0" (6401 mm)	22" (559 mm)	22" (559 mm)	24" (610 mm)	
Thru 23'0" (7010 mm)	22" (559 mm)	24" (610 mm)	24" (610 mm)	
Thru 25'0" (7620 mm)	24" (610 mm)	24" (610 mm)	26" (660 mm)	
Thru 28'0" (8534 mm)	24" (610 mm)	24" (610 mm)	26" (660 mm)	
Thru 30'0" (9144 mm)	26" (660 mm)	26" (660 mm)	28" (711 mm)	

Angle Guide

Face-of-Wall Mounted

Section B-B

E Guide



Between Jambs Mounted

Section B-B

Z Guide

