



## ADVANCED SYSTEMS

DESIGNERS & INTEGRATORS OF INDUSTRIAL DOORS & DOOR CONTROL SYSTEMS

1020 W. 14 MILE ROAD • CLAWSON, MI 48017 • PHONE 877 436- 0302 • WWW.ADVANCEDSYSTEMSDOORS.COM

# FAST-SEAL®

HIGH PERFORMANCE ROLLING DOOR

## The Door that Revolutionized the Industry.

When it was introduced with the first-ever Break-Away bottom bar, the Fast-Seal high-speed roll door changed the industry forever. Suddenly, a roll door is able to take a hit without suffering damage.

It is this concept around which the industry has grown, but no other manufacturer has matched the dependability or durability of the Fast-Seal with the original Break-Away bottom bar. This, along with its patented counterbalance and tension system, is why the Fast-Seal remains the best exterior high-speed fabric roll door on the market today.

**Fast** – Opens at up to 50 inches per second.

**Safe** – Dual electric photo eyes in side column and reversing edge in bottom bar. Optional, replaceable windows for visibility.

**Takes a Hit** – Patented Break-Away™ bottom bar can be reset in just seconds, without tools, virtually eliminating downtime and repair costs.

**System II™** – Patented, independent design separates counterbalance from door tension permitting effective break away and the ability to handle high wind loads and negative pressure.

**Full Tension** – Patented System II design provides proper counterbalance and panel tension at all times.

**Low Maintenance** – System II design comes with a lifetime warranty on all counterweights and tension springs.



**RYTEC**  
CORPORATION  
Driving The Door Industry.™



# ADVANCED SYSTEMS

DESIGNERS & INTEGRATORS OF INDUSTRIAL DOORS & DOOR CONTROL SYSTEMS

1020 W. 14 MILE ROAD • CLAWSON, MI 48017 • PHONE 877 436- 0302 • WWW.ADVANCEDSYSTEMSDOORS.COM

## FAST-SEAL®

HIGH PERFORMANCE ROLLING DOOR

**Specifications:** Subject to change

**Model:** Rytec® Fast-Seal® Door

**Standard Size:** Maximum width of 30 feet or maximum height of 24 feet.

**Door Panel:** 3-ply Rilon™ material. 2-ply Rilon material for doors up to 14 feet wide by 16 feet high. Optional replaceable windows or screens for Rilon panels. Clear 4 mm PVC material for interior doors up to 12 feet wide by 14 feet high.

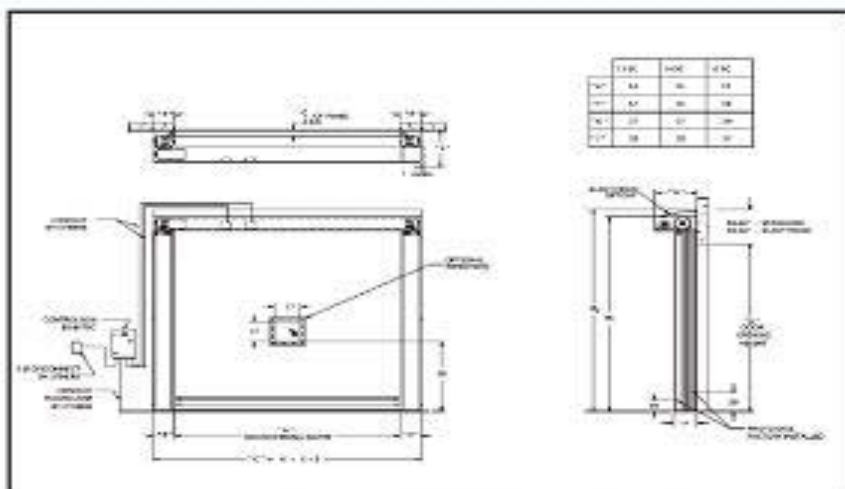
**Side Frames:** Fully bolt together, reinforced side frames with front and rear wind bar guides. Full-height vinyl weather stripping seals against fabric material. Dual thru-beam photo eyes factory installed in standard models.

**Counterbalance & Tensioning:** Patented System II design separates counterbalance and fabric tension. Counterbalance system consists of guided counterweights custom-sized to provide proper balancing of each door. Independent tension system maintains constant panel tension.

**Bottom Bar:** Patented Break-Away extruded aluminum bottom bar capable of releasing in either direction without damage to bar, reversing edge or side covers. Electric or pneumatic reversing edge standard. Standard dual cut-off switches automatically shut off motor when bottom bar is impacted. No exposed junction box on bottom bar.

**Drive System:** Three-phase, variable speed AC Drive provides soft acceleration and deceleration. Independent opening and closing speeds provide flexibility to accommodate any application. Motor and electrical components are factory wired to junction boxes in the head assembly.

**Travel Speed:** Opens at up to 50-inches per second.



**System 3 Controller**  
Makes programming and troubleshooting easier, more flexible and more precise than ever.



**Easy to Reset**  
Patented Break-Away bottom bar can be reset in just seconds, without tools, after taking a hit. Cut off switch deactivates motor when door is hit.

**Electrical Controls:** System 3® controller housed in a NEMA 4 rated enclosure with factory set parameters. Self-diagnostic features and a two-line, 32-character LCD display in English, Spanish or French provide quick and straight-forward installation and control adjustments. Programmable inputs and outputs accommodate special control requirements without the need for additional electrical components.

**Counterbalance System**  
Patented System II independent counterbalance and tension systems eliminate stress and strain on the motor and gear box by separating door counter-balance and fabric tension.



**Warranty:** One year limited warranty on materials and workmanship. Lifetime warranty on counterweights and tension springs. Five year limited warranty on 3-ply Rilon panel material.