



ADVANCED DOOR SYSTEMS

DESIGNERS & INTEGRATORS OF LOADING DOCK SYSTEMS

1020 W. 14 MILE ROAD • CLAWSON, MI 48017 • PHONE 877-436-0302 • WWW.ADVANCEDSYSTEMSDOORS.COM

Wireless Integrated Trailer Jack (WIT-J)

Wireless Trailer Jack improves loading dock operations by communicating via a signal light that the trailer jack is in position. This system can keep the door or dock leveler from being used until the jack is in position.



*Patent pending



Communication
Light

Model: WIT-J
Capacity: 100,000-lbs static
Capacity: 50,000-lbs lifting
Service range: 35-50 inches
Wheel Size: 12" Semi-pneumatic

www.uidss.com

OUR EQUIPMENT IS NOT BRAND SPECIFIC AND WORKS WITH YOUR EXISTING NEW OR USED EQUIPMENT!

AVOID TRAILER ACCIDENTS LIKE THESE!



Trailer stabilizing jacks provide a critical role in safety. A trailer jack that is not properly deployed can result in serious accidents such as *nose-overs, un-ending and landing-gear collapse.*



In addition to the obvious and serious threat to operator safety, these accidents result in damage to your equipment, your products, your buildings and your profitability.

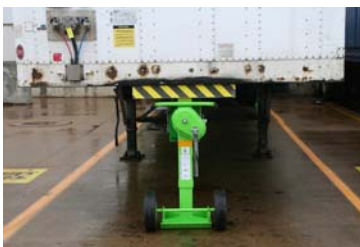


A single accident can result in an enormous drop in morale and productivity. Costs increase due to equipment repair, equipment replacement, building refurbishment and possible increases in insurance rates.



ENSURE YOUR TRAILER JACK IS IN POSITION!

When the Wireless Integrated Jack for Trailers* (WIJ-T) is put into position, communication lights signal that the unit is in place to both inside and outside personnel. The WIJ-T Communication System is also available as a kit to modify existing trailer jacks.



WIJ-T



TRUCK RESTRAINT



DOCK LEVELER



UIDSS



DOCK DOOR

Our Universal Integrated Dock Safety System* (UIDSS) can be configured to include the WIJ-T. This system provides the safest loading dock system possible. By forcing sequential operation, the WIJ-T and trailer restraints must be in place before the dock door or dock leveler can be used. We specifically designed this system to monitor itself and protect against human error providing the highest degree of protection for employees and equipment.

**Patent Pending*

CONTACT US ABOUT IMPROVING SAFETY AT YOUR DOCK!